

INDUSTRIAL PANEL PC

IPC4-101WFC Full Closed Chassie

IPC4 Full Closed industrial panel pc serie have features an elegant design using aluminum alloy flat panels, incorporating a fanless and fully enclosed integrated system. Its overall profile combines industrial-grade quality with a sleek commercial appearance. This versatile solution finds applications in various fields, including industrial control, military, communication, power, and automation, such as network infrastructure and intelligent self-service terminal equipment.

FEATURES

- Aesthetic And Technologically Advanced Appearance
- Efficient Heat Dissipation Design With Fanless Operation
- Suitable For Use In Diverse And Demanding Working Environments
- Crafted From Lightweight And Durable Aluminum Alloy
- Compliant With EMC Standards
- Equipped With Dual Gigabit Networks And Expandable Interfaces.
- Compatible With A Wide Voltage Power Supply Of 12-36V
- Multiple Installation Options
- IP65 Front Panel for Dust and Water Protection



10.1" Intel® Celeron®



10.1" Intel® Core™



PRODUCT SPECIFICATIONS

Screen Parameters

LCD Size	10.1" TFT LCD
Resolution	1280x800
Viewing Angle	85/85/85/85 (L/R/U/D)
Colour	16.7M
Brightness	300 cd/m ²
Contrast Ratio	1000:1

Interface

HDMI	1* HDMI, Support HDMI Data Output, 1080p
USB	2* USB 2.0 + 2* USB 3.0
LAN	2* LAN, Dual 1000M Adaptive Ethernet
AUDIO	1* Audio I/O, Support Audio Input and Output
VGA	1* VGA
Serial Port	1* RS232 + 1* RS232 RS485 RS422 [Adjustable via BIOS]

Touch Screen

Touch Screen Type	10 Point Touch PCAP & Resistive
Light Transmittance	≥88%
Input Mode	Handwriting or Capacitive Pen
Controller Communication	USB

Power Parameters

Input Voltage	DC 12V-36V - Double Input (Not Redundant)
Static Power	60W

Dimensions

Outer	W 261.4 x H 185.4 x D 59.2 mm
-------	-------------------------------

PRODUCT ORDERING CODES

Processor CPU	Body Color: Black		Body Color: Silver	
	PCAP	Resistive	PCAP	Resistive
Intel® Celeron® J6412	IPC4-101WFC-C10-6412	IPC4-101WFC-C20-6412	IPC4-101WFC-C11-6412	IPC4-101WFC-C21-6412
Intel® Core™ i3-8145U	IPC4-101WFC-i310-8145	IPC4-101WFC-i320-8145	IPC4-101WFC-i311-8145	IPC4-101WFC-i321-8145
Intel® Core™ i3-10110U	IPC4-101WFC-i310-10110	IPC4-101WFC-i320-10110	IPC4-101WFC-i311-10110	IPC4-101WFC-i321-10110
Intel® Core™ i5-8265U	IPC4-101WFC-i510-8265	IPC4-101WFC-i520-8265	IPC4-101WFC-i511-8265	IPC4-101WFC-i521-8265
Intel® Core™ i5-10210U	IPC4-101WFC-i510-10210	IPC4-101WFC-i520-10210	IPC4-101WFC-i511-10210	IPC4-101WFC-i521-10210
Intel® Core™ i7-7500U	IPC4-101WFC-i710-7500	IPC4-101WFC-i720-7500	IPC4-101WFC-i711-7500	IPC4-101WFC-i721-7500
Intel® Core™ i7-10510U	IPC4-101WFC-i710-10510	IPC4-101WFC-i720-10510	IPC4-101WFC-i711-10510	IPC4-101WFC-i721-10510

INDUSTRIAL PANEL PC

PROCESSOR MODELS | CPU



CPU	Intel® Celeron® J6412 2.00 GHz
CPU TURBO FREQUENCY	2.60 GHz
CORE	4
INTEGRATED GRAPHICS	Intel® HD Graphic 620

CPU	Intel® Core™ i3-8145U 2.10 GHz	Intel® Core™ i3-10110U 2.10 GHz
CPU TURBO FREQUENCY	3.90 GHz	4.10 GHz
CORE	2	2
INTEGRATED GRAPHICS	Intel Ultra HD Graphic 620	Intel Ultra HD Graphic 620

CPU	Intel® Core™ i5-8265U 1.60 GHz	Intel® Core™ i5-10210U 1.60 GHz
CPU TURBO FREQUENCY	3.90 GHz	4.20 GHz
CORE	4	4
INTEGRATED GRAPHICS	Intel Ultra HD Graphic 620	Intel Ultra HD Graphic 620

CPU	Intel® Core™ i7-7500U 2.70 GHz	Intel® Core™ i7-10510U 1.80 GHz
CPU TURBO FREQUENCY	3.50 GHz	4.90 GHz
CORE	4	4
INTEGRATED GRAPHICS	Intel Ultra HD Graphic 620	Intel Ultra HD Graphic 630

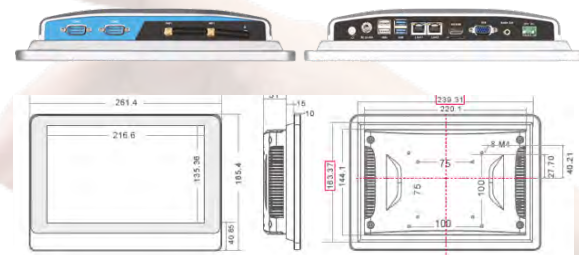
RAM	Default 8GB DDR4 Optional Intel® Celeron® up to 32GB Intel® Core™ Up To 64GB
STORAGE	Default 128GB Msata - Optional up to 512GB
WI-FI - BLUETOOTH	2.40 GHz / 5.00 GHz Dual Bands - Bluetooth 4.0
OPERATING SYSTEM	Windows 10/11; Ubuntu 16.04.7/8.04.5/20.04.3; Centos 7.6/7.8
OTHER SUPPORT	Support RTC Real-Time Clock and Timing Switch

PRODUCT RELIABILITY

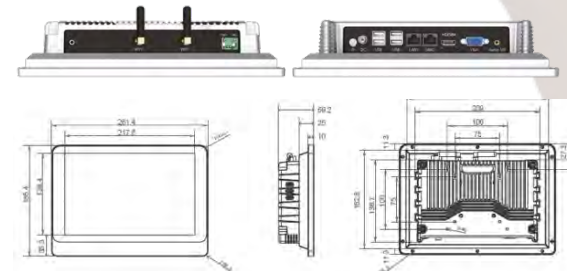
WORKING TEMPERATURE	-10°C~60°C
STORAGE TEMPERATURE	-20°C~70°C
RELATIVE HUMIDITY	95% Non-Condensing
VIBRATION PROTECTION	IEC 60068-2-64, 5 ~ 500 Hz, 1 hr/axis
IMPACT PROTECTION	IEC 60068-2-27, Half sine wave for 11ms
PRODUCT CERTIFICATION	CCC/CE/FCC/EMC/CB/ROHS

DIMENSIONS AND INTERFACES

Intel® Celeron®



Intel® Core™ i3 - i5 - i7



PRODUCT INSTALLATION TYPES



Embedded Installation	Wall Mounted Installation	Desktop Installation	Louver Installation	Cantilever Installation	Boom Type Installation
-----------------------	---------------------------	----------------------	---------------------	-------------------------	------------------------

INDUSTRIAL PANEL PC

IPC4-104WFC Full Closed Chassie

IPC4 Full Closed industrial panel pc serie have features an elegant design using aluminum alloy flat panels, incorporating a fanless and fully enclosed integrated system. Its overall profile combines industrial-grade quality with a sleek commercial appearance. This versatile solution finds applications in various fields, including industrial control, military, communication, power, and automation, such as network infrastructure and intelligent self-service terminal equipment.

FEATURES

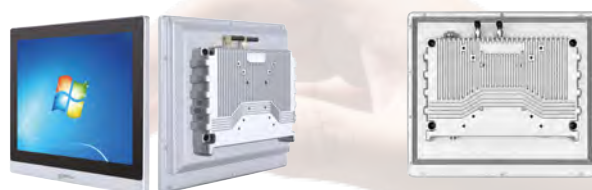
- Aesthetic And Technologically Advanced Appearance
- Efficient Heat Dissipation Design With Fanless Operation
- Suitable For Use In Diverse And Demanding Working Environments
- Crafted From Lightweight And Durable Aluminum Alloy
- Compliant With EMC Standards
- Equipped With Dual Gigabit Networks And Expandable Interfaces
- Compatible With A Wide Voltage Power Supply Of 12-36V
- Multiple Installation Options
- IP65 Front Panel for Dust and Water Protection



10.4" Intel® Celeron®



10.4" Intel® Core™



PRODUCT SPECIFICATIONS

Screen Parameters

LCD Size	10.4" TFT LCD
Resolution	1024×768
Viewing Angle	80/80/80/80 (L/R/U/D)
Colour	16.7M
Brightness	400 cd/m ²
Contrast Ratio	1000:1

Interface

HDMI	1* HDMI, Support HDMI Data Output, 1080p
USB	2* USB 2.0 + 2* USB 3.0
LAN	2* LAN, Dual 1000M Adaptive Ethernet
AUDIO	1* Audio I/O, Support Audio Input and Output
VGA	1* VGA
Serial Port	1* RS232 + 1* RS232 RS485 RS422 [Adjustable via BIOS]

Touch Screen

Touch Screen Type	10 Point Touch PCAP & Resistive
Light Transmittance	≥88%
Input Mode	Handwriting or Capacitive Pen
Controller Communication	USB

Power Parameters

Input Voltage	DC 12V-36V - Double Input (Not Redundant)
Static Power	60W

Dimensions

Outer	W 259 x H 224.7 x D 60.8 mm
-------	-----------------------------

PRODUCT ORDERING CODES

Processor CPU	Body Color: Black		Body Color: Silver	
	PCAP	Resistive	PCAP	Resistive
Intel® Celeron® J6412	IPC4-101WFC-C10-6412	IPC4-101WFC-C20-6412	IPC4-101WFC-C11-6412	IPC4-101WFC-C21-6412
Intel® Core™ i3-8145U	IPC4-101WFC-i310-8145	IPC4-101WFC-i320-8145	IPC4-101WFC-i311-8145	IPC4-101WFC-i321-8145
Intel® Core™ i3-10110U	IPC4-101WFC-i310-10110	IPC4-101WFC-i320-10110	IPC4-101WFC-i311-10110	IPC4-101WFC-i321-10110
Intel® Core™ i5-8265U	IPC4-101WFC-i510-8265	IPC4-101WFC-i520-8265	IPC4-101WFC-i511-8265	IPC4-101WFC-i521-8265
Intel® Core™ i5-10210U	IPC4-101WFC-i510-10210	IPC4-101WFC-i520-10210	IPC4-101WFC-i511-10210	IPC4-101WFC-i521-10210
Intel® Core™ i7-7500U	IPC4-101WFC-i710-7500	IPC4-101WFC-i720-7500	IPC4-101WFC-i711-7500	IPC4-101WFC-i721-7500
Intel® Core™ i7-10510U	IPC4-101WFC-i710-10510	IPC4-101WFC-i720-10510	IPC4-101WFC-i711-10510	IPC4-101WFC-i721-10510

INDUSTRIAL PANEL PC

PROCESSOR MODELS | CPU



CPU	Intel® Celeron® J6412 2.00 GHz
CPU TURBO FREQUENCY	2.60 GHz
CORE	4
INTEGRATED GRAPHICS	Intel® HD Graphic 620

CPU	Intel® Core™ I3-8145U 2.10 GHz	Intel® Core™ I3-10110U 2.10 GHz
CPU TURBO FREQUENCY	3.90 GHz	4.10 GHz
CORE	2	2
INTEGRATED GRAPHICS	Intel Ultra HD Graphic 620	Intel Ultra HD Graphic 620

CPU	Intel® Core™ I5-8265U 1.60 GHz	Intel® Core™ I5-10210U 1.60 GHz
CPU TURBO FREQUENCY	3.90 GHz	4.20 GHz
CORE	4	4
INTEGRATED GRAPHICS	Intel Ultra HD Graphic 620	Intel Ultra HD Graphic 620

CPU	Intel® Core™ I7-7500U 2.70 GHz	Intel® Core™ I7-10510U 1.80 GHz
CPU TURBO FREQUENCY	3.50 GHz	4.90 GHz
CORE	4	4
INTEGRATED GRAPHICS	Intel Ultra HD Graphic 620	Intel Ultra HD Graphic 630

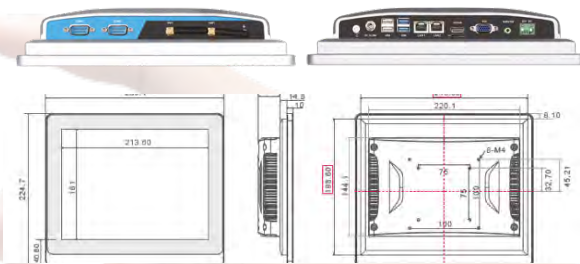
RAM	Default 8GB DDR4 Optional Intel® Celeron® up to 32GB Intel® Core™ Up To 64GB
STORAGE	Default 128GB Msata - Optional up to 512GB
WI-FI - BLUETOOTH	2.40 GHz / 5.00 GHz Dual Bands – Bluetooth 4.0
OPERATING SYSTEM	Windows 10/11; Ubuntu16.04.7/8.04.5/20.04.3; Centos7.6/7.8
OTHER SUPPORT	Support RTC Real-Time Clock and Timing Switch

PRODUCT RELIABILITY

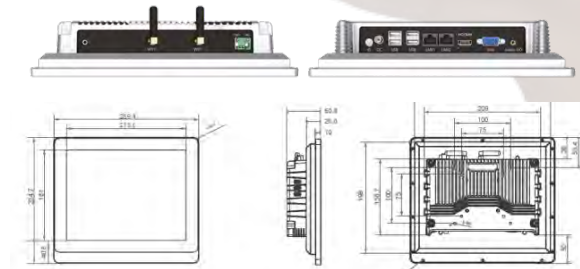
WORKING TEMPERATURE	-10°C~60°C
STORAGE TEMPERATURE	-20°C~70°C
RELATIVE HUMIDITY	95% Non-Condensing
VIBRATION PROTECTION	IEC 60068-2-64, 5 ~ 500 Hz, 1 hr/axis
IMPACT PROTECTION	IEC 60068-2-27, Half sine wave for 11ms
PRODUCT CERTIFICATION	CCC/CE/FCC/EMC/CB/ROHS

DIMENSIONS AND INTERFACES

Intel® Celeron®



Intel® Core™ i3 – i5 – i7



PRODUCT INSTALLATION TYPES



Embedded Installation	Wall Mounted Installation	Desktop Installation	Louver Installation	Cantilever Installation	Boom Type Installation
-----------------------	---------------------------	----------------------	---------------------	-------------------------	------------------------

INDUSTRIAL PANEL PC

IPC4-116WFC Full Closed Chassie

IPC4 Full Closed industrial panel pc serie have features an elegant design using aluminum alloy flat panels, incorporating a fanless and fully enclosed integrated system. Its overall profile combines industrial-grade quality with a sleek commercial appearance. This versatile solution finds applications in various fields, including industrial control, military, communication, power, and automation, such as network infrastructure and intelligent self-service terminal equipment.

FEATURES

- Aesthetic And Technologically Advanced Appearance
- Efficient Heat Dissipation Design With Fanless Operation
- Suitable For Use In Diverse And Demanding Working Environments
- Crafted From Lightweight And Durable Aluminum Alloy
- Compliant With EMC Standards
- Equipped With Dual Gigabit Networks And Expandable Interfaces.
- Compatible With A Wide Voltage Power Supply Of 12-36V
- Multiple Installation Options
- IP65 Front Panel for Dust and Water Protection



11.6" Intel® Celeron®



11.6" Intel® Core™



PRODUCT SPECIFICATIONS

Screen Parameters

LCD Size	11.6" TFT LCD
Resolution	1920×1080
Viewing Angle	85/85/85/85 (L/R/U/D)
Colour	16.7M
Brightness	300 cd/m ²
Contrast Ratio	1000:1

Interface

HDMI	1* HDMI, Support HDMI Data Output, 1080p
USB	2* USB 2.0 + 2* USB 3.0
LAN	2* LAN, Dual 1000M Adaptive Ethernet
AUDIO	1* Audio I/O, Support Audio Input and Output
VGA	1* VGA
Serial Port	1* RS232 + 1* RS232 RS485 RS422 [Adjustable via BIOS]

Touch Screen

Touch Screen Type	10 Point Touch PCAP & Resistive
Light Transmittance	≥88%
Input Mode	Handwriting or Capacitive Pen
Controller Communication	USB

Power Parameters

Input Voltage	DC 12V-36V - Double Input (Not Redundant)
Static Power	18W

Dimensions

Outer	W 257 x H 145 x D 54.5 mm
-------	---------------------------

PRODUCT ORDERING CODES

Processor CPU	Body Color: Black		Body Color: Silver	
	PCAP	Resistive	PCAP	Resistive
Intel® Celeron® J6412	IPC4-116WFC-C10-6412	-	IPC4-116WFC-C11-6412	-
Intel® Core™ i3-8145U	IPC4-116WFC-i310-8145	-	IPC4-116WFC-i311-8145	-
Intel® Core™ i3-10110U	IPC4-116WFC-i310-10110	-	IPC4-116WFC-i311-10110	-
Intel® Core™ i5-8265U	IPC4-116WFC-i510-8265	-	IPC4-116WFC-i511-8265	-
Intel® Core™ i5-10210U	IPC4-116WFC-i510-10210	-	IPC4-116WFC-i511-10210	-
Intel® Core™ i7-7500U	IPC4-116WFC-i710-7500	-	IPC4-116WFC-i711-7500	-
Intel® Core™ i7-10510U	IPC4-116WFC-i710-10510	-	IPC4-116WFC-i711-10510	-

INDUSTRIAL PANEL PC

PROCESSOR MODELS | CPU



CPU	Intel® Celeron® J6412 2.00 GHz
CPU TURBO FREQUENCY	2.60 GHz
CORE	4
INTEGRATED GRAPHICS	Intel® HD Graphic 620

CPU	Intel® Core™ I3-8145U 2.10 GHz	Intel® Core™ I3-10110U 2.10 GHz
CPU TURBO FREQUENCY	3.90 GHz	4.10 GHz
CORE	2	2
INTEGRATED GRAPHICS	Intel Ultra HD Graphic 620	Intel Ultra HD Graphic 620

CPU	Intel® Core™ I5-8265U 1.60 GHz	Intel® Core™ I5-10210U 1.60 GHz
CPU TURBO FREQUENCY	3.90 GHz	4.20 GHz
CORE	4	4
INTEGRATED GRAPHICS	Intel Ultra HD Graphic 620	Intel Ultra HD Graphic 620

CPU	Intel® Core™ I7-7500U 2.70 GHz	Intel® Core™ I7-10510U 1.80 GHz
CPU TURBO FREQUENCY	3.50 GHz	4.90 GHz
CORE	4	4
INTEGRATED GRAPHICS	Intel Ultra HD Graphic 620	Intel Ultra HD Graphic 630

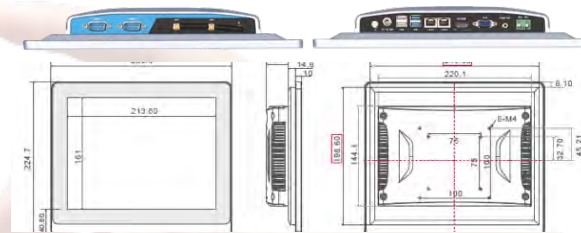
RAM	Default 8GB DDR4 Optional Intel® Celeron® up to 32GB Intel® Core™ Up To 64GB
STORAGE	Default 128GB Msata - Optional up to 512GB
WI-FI - BLUETOOTH	2.40 GHz / 5.00 GHz Dual Bands – Bluetooth 4.0
OPERATING SYSTEM	Windows 10/11; Ubuntu16.04.7/8.04.5/20.04.3; Centos7.6/7.8
OTHER SUPPORT	Support RTC Real-Time Clock and Timing Switch

PRODUCT RELIABILITY

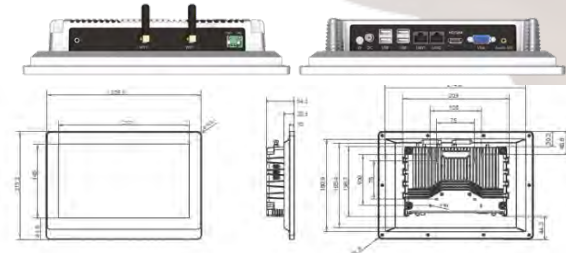
WORKING TEMPERATURE	-10°C~60°C
STORAGE TEMPERATURE	-20°C~70°C
RELATIVE HUMIDITY	95% Non-Condensing
VIBRATION PROTECTION	IEC 60068-2-64, 5 ~ 500 Hz, 1 hr/axis
IMPACT PROTECTION	IEC 60068-2-27, Half sine wave for 11ms
PRODUCT CERTIFICATION	CCC/CE/FCC/EMC/CB/ROHS

DIMENSIONS AND INTERFACES

Intel® Celeron®



Intel® Core™ i3 – i5 – i7



PRODUCT INSTALLATION TYPES



Embedded Installation	Wall Mounted Installation	Desktop Installation	Louver Installation	Cantilever Installation	Boom Type Installation
-----------------------	---------------------------	----------------------	---------------------	-------------------------	------------------------

INDUSTRIAL PANEL PC

IPC4-120WFC Full Closed Chassie

IPC4 Full Closed industrial panel pc serie have features an elegant design using aluminum alloy flat panels, incorporating a fanless and fully enclosed integrated system. Its overall profile combines industrial-grade quality with a sleek commercial appearance. This versatile solution finds applications in various fields, including industrial control, military, communication, power, and automation, such as network infrastructure and intelligent self-service terminal equipment.

FEATURES

- Aesthetic And Technologically Advanced Appearance
- Efficient Heat Dissipation Design With Fanless Operation
- Suitable For Use In Diverse And Demanding Working Environments
- Crafted From Lightweight And Durable Aluminum Alloy
- Compliant With EMC Standards
- Equipped With Dual Gigabit Networks And Expandable Interfaces.
- Compatible With A Wide Voltage Power Supply Of 12-36V
- Multiple Installation Options
- IP65 Front Panel for Dust and Water Protection



12" Intel® Celeron®



12" Intel® Core™



PRODUCT SPECIFICATIONS

Screen Parameters

LCD Size	12" TFT LCD
Resolution	1024×768
Viewing Angle	85/85/85/85 (L/R/U/D)
Colour	16.7M
Brightness	500 cd/m ²
Contrast Ratio	1000:1

Touch Screen

Touch Screen Type	10 Point Touch PCAP & Resistive
Light Transmittance	≥88%
Input Mode	Handwriting or Capacitive Pen
Controller Communication	USB

Interface

HDMI	1* HDMI, Support HDMI Data Output, 1080p
USB	2* USB 2.0 + 2* USB 3.0
LAN	2* LAN, Dual 1000M Adaptive Ethernet
AUDIO	1* Audio I/O, Support Audio Input and Output
VGA	1* VGA
Serial Port	1* RS232 + 1* RS232 RS485 RS422 [Adjustable via BIOS]

Power Parameters

Input Voltage	DC 12V-36V - Double Input (Not Redundant)
Static Power	60W

Dimensions

Outer	W 292 x H 250.5 x D 64.2 mm
-------	-----------------------------

PRODUCT ORDERING CODES

Processor CPU	Body Color: Black		Body Color: Silver	
	PCAP	Resistive	PCAP	Resistive
Intel® Celeron® J6412	IPC4-120WFC-C10-6412	IPC4-120WFC-C20-6412	IPC4-120WFC-C11-6412	IPC4-120WFC-C21-6412
Intel® Core™ i3-8145U	IPC4-120WFC-i310-8145	IPC4-120WFC-i320-8145	IPC4-120WFC-i311-8145	IPC4-120WFC-i321-8145
Intel® Core™ i3-10110U	IPC4-120WFC-i310-10110	IPC4-120WFC-i320-10110	IPC4-120WFC-i311-10110	IPC4-120WFC-i321-10110
Intel® Core™ i5-8265U	IPC4-120WFC-i510-8265	IPC4-120WFC-i520-8265	IPC4-120WFC-i511-8265	IPC4-120WFC-i521-8265
Intel® Core™ i5-10210U	IPC4-120WFC-i510-10210	IPC4-120WFC-i520-10210	IPC4-120WFC-i511-10210	IPC4-120WFC-i521-10210
Intel® Core™ i7-7500U	IPC4-120WFC-i710-7500	IPC4-120WFC-i720-7500	IPC4-120WFC-i711-7500	IPC4-120WFC-i721-7500
Intel® Core™ i7-10510U	IPC4-120WFC-i710-10510	IPC4-120WFC-i720-10510	IPC4-120WFC-i711-10510	IPC4-120WFC-i721-10510

INDUSTRIAL PANEL PC

PROCESSOR MODELS | CPU



CPU	Intel® Celeron® J6412 2.00 GHz
CPU TURBO FREQUENCY	2.60 GHz
CORE	4
INTEGRATED GRAPHICS	Intel® HD Graphic 620

CPU	Intel® Core™ I3-8145U 2.10 GHz	Intel® Core™ I3-10110U 2.10 GHz
CPU TURBO FREQUENCY	3.90 GHz	4.10 GHz
CORE	2	2
INTEGRATED GRAPHICS	Intel Ultra HD Graphic 620	Intel Ultra HD Graphic 620

CPU	Intel® Core™ I5-8265U 1.60 GHz	Intel® Core™ I5-10210U 1.60 GHz
CPU TURBO FREQUENCY	3.90 GHz	4.20 GHz
CORE	4	4
INTEGRATED GRAPHICS	Intel Ultra HD Graphic 620	Intel Ultra HD Graphic 620

CPU	Intel® Core™ I7-7500U 2.70 GHz	Intel® Core™ I7-10510U 1.80 GHz
CPU TURBO FREQUENCY	3.50 GHz	4.90 GHz
CORE	4	4
INTEGRATED GRAPHICS	Intel Ultra HD Graphic 620	Intel Ultra HD Graphic 630

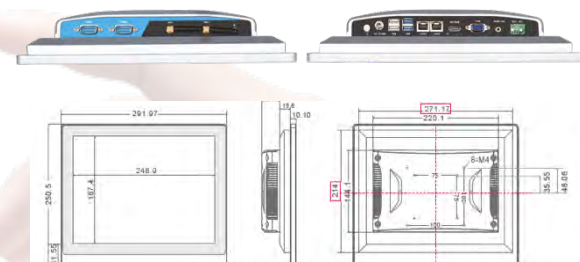
RAM	Default 8GB DDR4 Optional Intel® Celeron® up to 32GB Intel® Core™ Up To 64GB
STORAGE	Default 128GB Msata - Optional up to 512GB
WI-FI - BLUETOOTH	2.40 GHz / 5.00 GHz Dual Bands - Bluetooth 4.0
OPERATING SYSTEM	Windows 10/11; Ubuntu 16.04.7/8.04.5/20.04.3; Centos 7.6/7.8
OTHER SUPPORT	Support RTC Real-Time Clock and Timing Switch

PRODUCT RELIABILITY

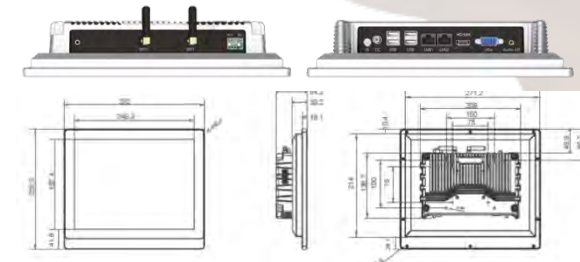
WORKING TEMPERATURE	-10°C~60°C
STORAGE TEMPERATURE	-20°C~70°C
RELATIVE HUMIDITY	95% Non-Condensing
VIBRATION PROTECTION	IEC 60068-2-64, 5 ~ 500 Hz, 1 hr/axis
IMPACT PROTECTION	IEC 60068-2-27, Half sine wave for 11ms
PRODUCT CERTIFICATION	CCC/CE/FCC/EMC/CB/ROHS

DIMENSIONS AND INTERFACES

Intel® Celeron®



Intel® Core™ i3 - i5 - i7



PRODUCT INSTALLATION TYPES



Embedded Installation	Wall Mounted Installation	Desktop Installation	Louver Installation	Cantilever Installation	Boom Type Installation
-----------------------	---------------------------	----------------------	---------------------	-------------------------	------------------------

INDUSTRIAL PANEL PC

IPC4-150WFC Full Closed Chassie

IPC4 Full Closed industrial panel pc serie have features an elegant design using aluminum alloy flat panels, incorporating a fanless and fully enclosed integrated system. Its overall profile combines industrial-grade quality with a sleek commercial appearance. This versatile solution finds applications in various fields, including industrial control, military, communication, power, and automation, such as network infrastructure and intelligent self-service terminal equipment.

FEATURES

- Aesthetic And Technologically Advanced Appearance
- Efficient Heat Dissipation Design With Fanless Operation
- Suitable For Use In Diverse And Demanding Working Environments
- Crafted From Lightweight And Durable Aluminum Alloy
- Compliant With EMC Standards
- Equipped With Dual Gigabit Networks And Expandable Interfaces.
- Compatible With A Wide Voltage Power Supply Of 12-36V
- Multiple Installation Options
- IP65 Front Panel for Dust and Water Protection



15" Intel® Celeron®



15" Intel® Core™



PRODUCT SPECIFICATIONS

Screen Parameters

LCD Size	15" TFT LCD
Resolution	1024×768
Viewing Angle	89/89/89/89 (L/R/U/D)
Colour	16.7M
Brightness	300 cd/m ²
Contrast Ratio	1000:1

Touch Screen

Touch Screen Type	10 Point Touch PCAP & Resistive
Light Transmittance	≥88%
Input Mode	Handwriting or Capacitive Pen
Controller Communication	USB

Interface

HDMI	1* HDMI, Support HDMI Data Output, 1080p
USB	2* USB 2.0 + 2* USB 3.0
LAN	2* LAN, Dual 1000M Adaptive Ethernet
AUDIO	1* Audio I/O, Support Audio Input and Output
VGA	1* VGA
Serial Port	1* RS232 + 1* RS232 RS485 RS422 [Adjustable via BIOS]

Power Parameters

Input Voltage	DC 12V-36V - Double Input (Not Redundant)
Static Power	60W

Dimensions

Outer	W 350.5 x H 296.4 x D 62.7 mm
-------	-------------------------------

PRODUCT ORDERING CODES

Processor CPU	Body Color: Black		Body Color: Silver	
	PCAP	Resistive	PCAP	Resistive
Intel® Celeron® J6412	IPC4-150WFC-C10-6412	IPC4-150WFC-C20-6412	IPC4-150WFC-C11-6412	IPC4-150WFC-C21-6412
Intel® Core™ i3-8145U	IPC4-150WFC-i310-8145	IPC4-150WFC-i320-8145	IPC4-150WFC-i311-8145	IPC4-150WFC-i321-8145
Intel® Core™ i3-10110U	IPC4-150WFC-i310-10110	IPC4-150WFC-i320-10110	IPC4-150WFC-i311-10110	IPC4-150WFC-i321-10110
Intel® Core™ i5-8265U	IPC4-150WFC-i510-8265	IPC4-150WFC-i520-8265	IPC4-150WFC-i511-8265	IPC4-150WFC-i521-8265
Intel® Core™ i5-10210U	IPC4-150WFC-i510-10210	IPC4-150WFC-i520-10210	IPC4-150WFC-i511-10210	IPC4-150WFC-i521-10210
Intel® Core™ i7-7500U	IPC4-150WFC-i710-7500	IPC4-150WFC-i720-7500	IPC4-150WFC-i711-7500	IPC4-150WFC-i721-7500
Intel® Core™ i7-10510U	IPC4-150WFC-i710-10510	IPC4-150WFC-i720-10510	IPC4-150WFC-i711-10510	IPC4-150WFC-i721-10510

INDUSTRIAL PANEL PC

PROCESSOR MODELS | CPU



CPU	Intel® Celeron® J6412 2.00 GHz
CPU TURBO FREQUENCY	2.60 GHz
CORE	4
INTEGRATED GRAPHICS	Intel® HD Graphic 620

CPU	Intel® Core™ I3-8145U 2.10 GHz	Intel® Core™ I3-10110U 2.10 GHz
CPU TURBO FREQUENCY	3.90 GHz	4.10 GHz
CORE	2	2
INTEGRATED GRAPHICS	Intel Ultra HD Graphic 620	Intel Ultra HD Graphic 620

CPU	Intel® Core™ I5-8265U 1.60 GHz	Intel® Core™ I5-10210U 1.60 GHz
CPU TURBO FREQUENCY	3.90 GHz	4.20 GHz
CORE	4	4
INTEGRATED GRAPHICS	Intel Ultra HD Graphic 620	Intel Ultra HD Graphic 620

CPU	Intel® Core™ I7-7500U 2.70 GHz	Intel® Core™ I7-10510U 1.80 GHz
CPU TURBO FREQUENCY	3.50 GHz	4.90 GHz
CORE	4	4
INTEGRATED GRAPHICS	Intel Ultra HD Graphic 620	Intel Ultra HD Graphic 630

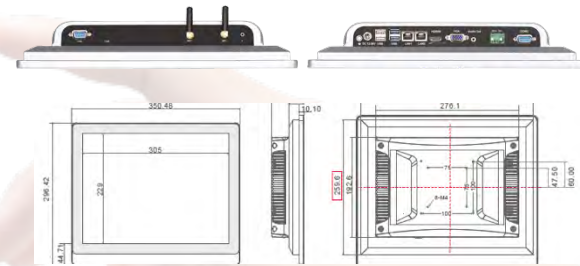
RAM	Default 8GB DDR4 Optional Intel® Celeron® up to 32GB Intel® Core™ Up To 64GB
STORAGE	Default 128GB Msata - Optional up to 512GB
WI-FI - BLUETOOTH	2.40 GHz / 5.00 GHz Dual Bands - Bluetooth 4.0
OPERATING SYSTEM	Windows 10/11; Ubuntu16.04.7/8.04.5/20.04.3; Centos7.6/7.8
OTHER SUPPORT	Support RTC Real-Time Clock and Timing Switch

PRODUCT RELIABILITY

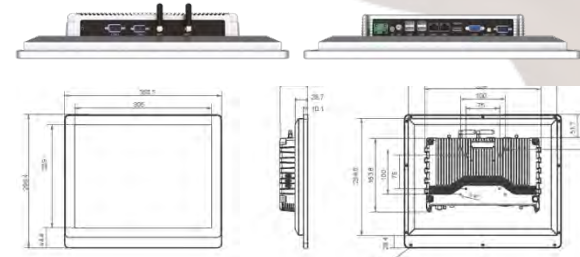
WORKING TEMPERATURE	-10°C~60°C
STORAGE TEMPERATURE	-20°C~70°C
RELATIVE HUMIDITY	95% Non-Condensing
VIBRATION PROTECTION	IEC 60068-2-64, 5 ~ 500 Hz, 1 hr/axis
IMPACT PROTECTION	IEC 60068-2-27, Half sine wave for 11ms
PRODUCT CERTIFICATION	CCC/CE/FCC/EMC/CB/ROHS

DIMENSIONS AND INTERFACES

Intel® Celeron®



Intel® Core™ i3 - i5 - i7



PRODUCT INSTALLATION TYPES



Embedded Installation	Wall Mounted Installation	Desktop Installation	Louver Installation	Cantilever Installation	Boom Type Installation
-----------------------	---------------------------	----------------------	---------------------	-------------------------	------------------------

INDUSTRIAL PANEL PC

IPC4-156WFC Full Closed Chassie

IPC4 Full Closed industrial panel pc serie have features an elegant design using aluminum alloy flat panels, incorporating a fanless and fully enclosed integrated system. Its overall profile combines industrial-grade quality with a sleek commercial appearance. This versatile solution finds applications in various fields, including industrial control, military, communication, power, and automation, such as network infrastructure and intelligent self-service terminal equipment.

FEATURES

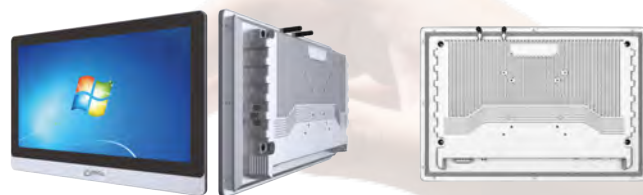
- Aesthetic And Technologically Advanced Appearance
- Efficient Heat Dissipation Design With Fanless Operation
- Suitable For Use In Diverse And Demanding Working Environments
- Crafted From Lightweight And Durable Aluminum Alloy
- Compliant With EMC Standards
- Equipped With Dual Gigabit Networks And Expandable Interfaces.
- Compatible With A Wide Voltage Power Supply Of 12-36V
- Multiple Installation Options
- IP65 Front Panel for Dust and Water Protection



15.6" Intel® Celeron®



15.6" Intel® Core™



PRODUCT SPECIFICATIONS

Screen Parameters

LCD Size	15.6" TFT LCD
Resolution	1920×1080
Viewing Angle	85/85/85/85 (L/R/U/D)
Colour	16.7M
Brightness	300 cd/m ²
Contrast Ratio	800:1

Interface

HDMI	1* HDMI, Support HDMI Data Output, 1080p
USB	2* USB 2.0 + 2* USB 3.0
LAN	2* LAN, Dual 1000M Adaptive Ethernet
AUDIO	1* Audio I/O, Support Audio Input and Output
VGA	1* VGA
Serial Port	1* RS232 + 1* RS232 RS485 RS422 [Adjustable via BIOS]

Touch Screen

Touch Screen Type	10 Point Touch PCAP & Resistive
Light Transmittance	≥88%
Input Mode	Handwriting or Capacitive Pen
Controller Communication	USB

Power Parameters

Input Voltage	DC 12V-36V - Double Input (Not Redundant)
Static Power	60W

Dimensions

Outer	W 389.6 x H 264 x D 63 mm
-------	---------------------------

PRODUCT ORDERING CODES

Processor CPU	Body Color: Black		Body Color: Silver	
	PCAP	Resistive	PCAP	Resistive
Intel® Celeron® J6412	IPC4-156WFC-C10-6412	IPC4-156WFC-C20-6412	IPC4-156WFC-C11-6412	IPC4-156WFC-C21-6412
Intel® Core™ i3-8145U	IPC4-156WFC-i310-8145	IPC4-156WFC-i320-8145	IPC4-156WFC-i311-8145	IPC4-156WFC-i321-8145
Intel® Core™ i3-10110U	IPC4-156WFC-i310-10110	IPC4-156WFC-i320-10110	IPC4-156WFC-i311-10110	IPC4-156WFC-i321-10110
Intel® Core™ i5-8265U	IPC4-156WFC-i510-8265	IPC4-156WFC-i520-8265	IPC4-156WFC-i511-8265	IPC4-156WFC-i521-8265
Intel® Core™ i5-10210U	IPC4-156WFC-i510-10210	IPC4-156WFC-i520-10210	IPC4-156WFC-i511-10210	IPC4-156WFC-i521-10210
Intel® Core™ i7-7500U	IPC4-156WFC-i710-7500	IPC4-156WFC-i720-7500	IPC4-156WFC-i711-7500	IPC4-156WFC-i721-7500
Intel® Core™ i7-10510U	IPC4-156WFC-i710-10510	IPC4-156WFC-i720-10510	IPC4-156WFC-i711-10510	IPC4-156WFC-i721-10510

INDUSTRIAL PANEL PC

PROCESSOR MODELS | CPU



CPU	Intel® Celeron® J6412 2.00 GHz
CPU TURBO FREQUENCY	2.60 GHz
CORE	4
INTEGRATED GRAPHICS	Intel® HD Graphic 620

CPU	Intel® Core™ i3-8145U 2.10 GHz	Intel® Core™ i3-10110U 2.10 GHz
CPU TURBO FREQUENCY	3.90 GHz	4.10 GHz
CORE	2	2
INTEGRATED GRAPHICS	Intel Ultra HD Graphic 620	Intel Ultra HD Graphic 620

CPU	Intel® Core™ i5-8265U 1.60 GHz	Intel® Core™ i5-10210U 1.60 GHz
CPU TURBO FREQUENCY	3.90 GHz	4.20 GHz
CORE	4	4
INTEGRATED GRAPHICS	Intel Ultra HD Graphic 620	Intel Ultra HD Graphic 620

CPU	Intel® Core™ i7-7500U 2.70 GHz	Intel® Core™ i7-10510U 1.80 GHz
CPU TURBO FREQUENCY	3.50 GHz	4.90 GHz
CORE	4	4
INTEGRATED GRAPHICS	Intel Ultra HD Graphic 620	Intel Ultra HD Graphic 630

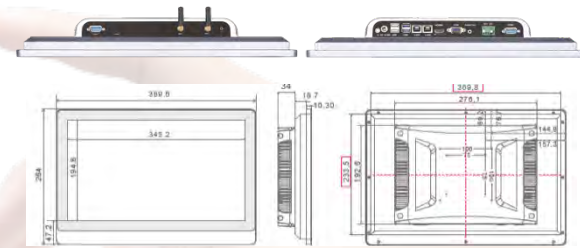
RAM	Default 8GB DDR4 Optional Intel® Celeron® up to 32GB Intel® Core™ Up To 64GB
STORAGE	Default 128GB Msata - Optional up to 512GB
WI-FI - BLUETOOTH	2.40 GHz / 5.00 GHz Dual Bands - Bluetooth 4.0
OPERATING SYSTEM	Windows 10/11; Ubuntu16.04.7/8.04.5/20.04.3; Centos7.6/7.8
OTHER SUPPORT	Support RTC Real-Time Clock and Timing Switch

PRODUCT RELIABILITY

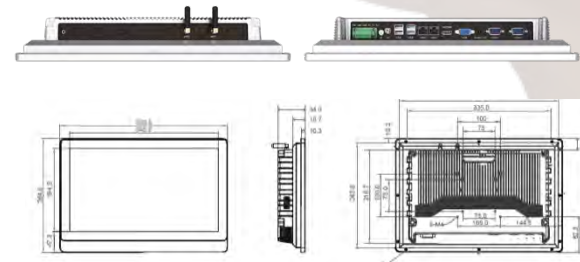
WORKING TEMPERATURE	-10°C~60°C
STORAGE TEMPERATURE	-20°C~70°C
RELATIVE HUMIDITY	95% Non-Condensing
VIBRATION PROTECTION	IEC 60068-2-64, 5 ~ 500 Hz, 1 hr/axis
IMPACT PROTECTION	IEC 60068-2-27, Half sine wave for 11ms
PRODUCT CERTIFICATION	CCC/CE/FCC/EMC/CB/ROHS

DIMENSIONS AND INTERFACES

Intel® Celeron®



Intel® Core™ i3 - i5 - i7



PRODUCT INSTALLATION TYPES



Embedded Installation	Wall Mounted Installation	Desktop Installation	Louver Installation	Cantilever Installation	Boom Type Installation
-----------------------	---------------------------	----------------------	---------------------	-------------------------	------------------------

INDUSTRIAL PANEL PC

IPC4-170WFC Full Closed Chassie

IPC4 Full Closed industrial panel pc serie have features an elegant design using aluminum alloy flat panels, incorporating a fanless and fully enclosed integrated system. Its overall profile combines industrial-grade quality with a sleek commercial appearance. This versatile solution finds applications in various fields, including industrial control, military, communication, power, and automation, such as network infrastructure and intelligent self-service terminal equipment.

FEATURES

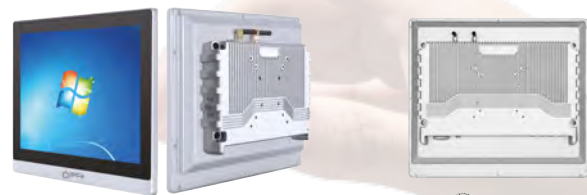
- Aesthetic And Technologically Advanced Appearance
- Efficient Heat Dissipation Design With Fanless Operation
- Suitable For Use In Diverse And Demanding Working Environments
- Crafted From Lightweight And Durable Aluminum Alloy
- Compliant With EMC Standards
- Equipped With Dual Gigabit Networks And Expandable Interfaces.
- Compatible With A Wide Voltage Power Supply Of 12-36V
- Multiple Installation Options
- IP65 Front Panel for Dust and Water Protection



17" Intel® Celeron®



17" Intel® Core™



PRODUCT SPECIFICATIONS

Screen Parameters

LCD Size	17" TFT LCD
Resolution	1280×1024
Viewing Angle	85/85/80/70 (L/R/U/D)
Colour	16.7M
Brightness	300 cd/m ²
Contrast Ratio	1000:1

Interface

HDMI	1* HDMI, Support HDMI Data Output, 1080p
USB	2* USB 2.0 + 2* USB 3.0
LAN	2* LAN, Dual 1000M Adaptive Ethernet
AUDIO	1* Audio I/O, Support Audio Input and Output
VGA	1* VGA
Serial Port	1* RS232 + 1* RS232 RS485 RS422 [Adjustable via BIOS]

Touch Screen

Touch Screen Type	10 Point Touch PCAP & Resistive
Light Transmittance	≥88%
Input Mode	Handwriting or Capacitive Pen
Controller Communication	USB

Power Parameters

Input Voltage	DC 12V-36V - Double Input (Not Redundant)
Static Power	60W

Dimensions

Outer	W 383.3 x H 340.7 x D 61.9 mm
-------	-------------------------------

PRODUCT ORDERING CODES

Processor CPU	Body Color: Black		Body Color: Silver	
	PCAP	Resistive	PCAP	Resistive
Intel® Celeron® J6412	IPC4-170WFC-C10-6412	IPC4-170WFC-C20-6412	IPC4-170WFC-C11-6412	IPC4-170WFC-C21-6412
Intel® Core™ i3-8145U	IPC4-170WFC-i310-8145	IPC4-170WFC-i320-8145	IPC4-170WFC-i311-8145	IPC4-170WFC-i321-8145
Intel® Core™ i3-10110U	IPC4-170WFC-i310-10110	IPC4-170WFC-i320-10110	IPC4-170WFC-i311-10110	IPC4-170WFC-i321-10110
Intel® Core™ i5-8265U	IPC4-170WFC-i510-8265	IPC4-170WFC-i520-8265	IPC4-170WFC-i511-8265	IPC4-170WFC-i521-8265
Intel® Core™ i5-10210U	IPC4-170WFC-i510-10210	IPC4-170WFC-i520-10210	IPC4-170WFC-i511-10210	IPC4-170WFC-i521-10210
Intel® Core™ i7-7500U	IPC4-170WFC-i710-7500	IPC4-170WFC-i720-7500	IPC4-170WFC-i711-7500	IPC4-170WFC-i721-7500
Intel® Core™ i7-10510U	IPC4-170WFC-i710-10510	IPC4-170WFC-i720-10510	IPC4-170WFC-i711-10510	IPC4-170WFC-i721-10510

INDUSTRIAL PANEL PC

PROCESSOR MODELS | CPU



CPU	Intel® Celeron® J6412 2.00 GHz
CPU TURBO FREQUENCY	2.60 GHz
CORE	4
INTEGRATED GRAPHICS	Intel® HD Graphic 620

CPU	Intel® Core™ I3-8145U 2.10 GHz	Intel® Core™ I3-10110U 2.10 GHz
CPU TURBO FREQUENCY	3.90 GHz	4.10 GHz
CORE	2	2
INTEGRATED GRAPHICS	Intel Ultra HD Graphic 620	Intel Ultra HD Graphic 620

CPU	Intel® Core™ I5-8265U 1.60 GHz	Intel® Core™ I5-10210U 1.60 GHz
CPU TURBO FREQUENCY	3.90 GHz	4.20 GHz
CORE	4	4
INTEGRATED GRAPHICS	Intel Ultra HD Graphic 620	Intel Ultra HD Graphic 620

CPU	Intel® Core™ I7-7500U 2.70 GHz	Intel® Core™ I7-10510U 1.80 GHz
CPU TURBO FREQUENCY	3.50 GHz	4.90 GHz
CORE	4	4
INTEGRATED GRAPHICS	Intel Ultra HD Graphic 620	Intel Ultra HD Graphic 630

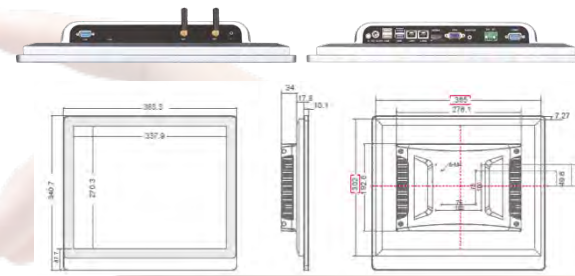
RAM	Default 8GB DDR4 Optional Intel® Celeron® up to 32GB Intel® Core™ Up To 64GB
STORAGE	Default 128GB Msata - Optional up to 512GB
WI-FI - BLUETOOTH	2.40 GHz / 5.00 GHz Dual Bands - Bluetooth 4.0
OPERATING SYSTEM	Windows 10/11; Ubuntu 16.04.7/8.04.5/20.04.3; Centos 7.6/7.8
OTHER SUPPORT	Support RTC Real-Time Clock and Timing Switch

PRODUCT RELIABILITY

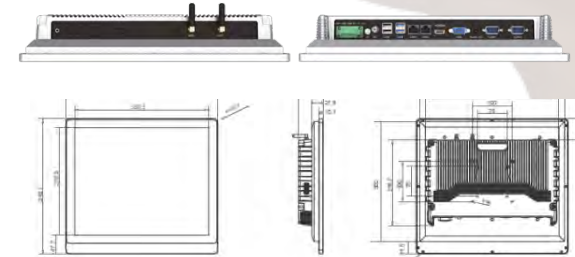
WORKING TEMPERATURE	-10°C~60°C
STORAGE TEMPERATURE	-20°C~70°C
RELATIVE HUMIDITY	95% Non-Condensing
VIBRATION PROTECTION	IEC 60068-2-64, 5 ~ 500 Hz, 1 hr/axis
IMPACT PROTECTION	IEC 60068-2-27, Half sine wave Ffor 11ms
PRODUCT CERTIFICATION	CCC/CE/FCC/EMC/CB/ROHS

DIMENSIONS AND INTERFACES

Intel® Celeron®



Intel® Core™ i3 - i5 - i7



PRODUCT INSTALLATION TYPES



Embedded Installation	Wall Mounted Installation	Desktop Installation	Louver Installation	Cantilever Installation	Boom Type Installation
-----------------------	---------------------------	----------------------	---------------------	-------------------------	------------------------

INDUSTRIAL PANEL PC

IPC4-173WFC Full Closed Chassie

IPC4 Full Closed industrial panel pc serie have features an elegant design using aluminum alloy flat panels, incorporating a fanless and fully enclosed integrated system. Its overall profile combines industrial-grade quality with a sleek commercial appearance. This versatile solution finds applications in various fields, including industrial control, military, communication, power, and automation, such as network infrastructure and intelligent self-service terminal equipment.

FEATURES

- Aesthetic And Technologically Advanced Appearance
- Efficient Heat Dissipation Design With Fanless Operation
- Suitable For Use In Diverse And Demanding Working Environments
- Crafted From Lightweight And Durable Aluminum Alloy
- Compliant With EMC Standards
- Equipped With Dual Gigabit Networks And Expandable Interfaces.
- Compatible With A Wide Voltage Power Supply Of 12-36V
- Multiple Installation Options
- IP65 Front Panel for Dust and Water Protection



17.3" Intel® Celeron®



17.3" Intel® Core™



PRODUCT SPECIFICATIONS

Screen Parameters

LCD Size	17.3" TFT LCD
Resolution	1920×1080
Viewing Angle	80/80/60/80 (L/R/U/D)
Colour	16.7M
Brightness	300 cd/m ²
Contrast Ratio	600:1

Interface

HDMI	1* HDMI, Support HDMI Data Output, 1080p
USB	2* USB 2.0 + 2* USB 3.0
LAN	2* LAN, Dual 1000M Adaptive Ethernet
AUDIO	1* Audio I/O, Support Audio Input and Output
VGA	1* VGA
Serial Port	1* RS232 + 1* RS232 RS485 RS422 [Adjustable via BIOS]

Touch Screen

Touch Screen Type	10 Point Touch PCAP & Resistive
Light Transmittance	≥88%
Input Mode	Handwriting or Capacitive Pen
Controller Communication	USB

Power Parameters

Input Voltage	DC 12V-36V - Double Input (Not Redundant)
Static Power	60W

Dimensions

Outer	W 427.7 x H 285.4 x D 62.4 mm
-------	-------------------------------

PRODUCT ORDERING CODES

Processor CPU	Body Color: Black		Body Color: Silver	
	PCAP	Resistive	PCAP	Resistive
Intel® Celeron® J6412	IPC4-173WFC-C10-6412	IPC4-173WFC-C20-6412	IPC4-173WFC-C11-6412	IPC4-173WFC-C21-6412
Intel® Core™ i3-8145U	IPC4-173WFC-i310-8145	IPC4-173WFC-i320-8145	IPC4-173WFC-i311-8145	IPC4-173WFC-i321-8145
Intel® Core™ i3-10110U	IPC4-173WFC-i310-10110	IPC4-173WFC-i320-10110	IPC4-173WFC-i311-10110	IPC4-173WFC-i321-10110
Intel® Core™ i5-8265U	IPC4-173WFC-i510-8265	IPC4-173WFC-i520-8265	IPC4-173WFC-i511-8265	IPC4-173WFC-i521-8265
Intel® Core™ i5-10210U	IPC4-173WFC-i510-10210	IPC4-173WFC-i520-10210	IPC4-173WFC-i511-10210	IPC4-173WFC-i521-10210
Intel® Core™ i7-7500U	IPC4-173WFC-i710-7500	IPC4-173WFC-i720-7500	IPC4-173WFC-i711-7500	IPC4-173WFC-i721-7500
Intel® Core™ i7-10510U	IPC4-173WFC-i710-10510	IPC4-173WFC-i720-10510	IPC4-173WFC-i711-10510	IPC4-173WFC-i721-10510

INDUSTRIAL PANEL PC

PROCESSOR MODELS | CPU



CPU	Intel® Celeron® J6412 2.00 GHz
CPU TURBO FREQUENCY	2.60 GHz
CORE	4
INTEGRATED GRAPHICS	Intel® HD Graphic 620

CPU	Intel® Core™ I3-8145U 2.10 GHz	Intel® Core™ I3-10110U 2.10 GHz
CPU TURBO FREQUENCY	3.90 GHz	4.10 GHz
CORE	2	2
INTEGRATED GRAPHICS	Intel Ultra HD Graphic 620	Intel Ultra HD Graphic 620

CPU	Intel® Core™ I5-8265U 1.60 GHz	Intel® Core™ I5-10210U 1.60 GHz
CPU TURBO FREQUENCY	3.90 GHz	4.20 GHz
CORE	4	4
INTEGRATED GRAPHICS	Intel Ultra HD Graphic 620	Intel Ultra HD Graphic 620

CPU	Intel® Core™ I7-7500U 2.70 GHz	Intel® Core™ I7-10510U 1.80 GHz
CPU TURBO FREQUENCY	3.50 GHz	4.90 GHz
CORE	4	4
INTEGRATED GRAPHICS	Intel Ultra HD Graphic 620	Intel Ultra HD Graphic 630

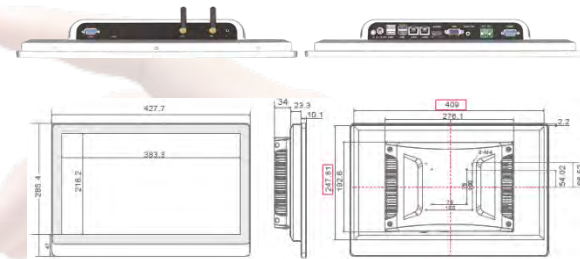
RAM	Default 8GB DDR4 Optional Intel® Celeron® up to 32GB Intel® Core™ Up To 64GB
STORAGE	Default 128GB Msata - Optional up to 512GB
WI-FI - BLUETOOTH	2.40 GHz / 5.00 GHz Dual Bands - Bluetooth 4.0
OPERATING SYSTEM	Windows 10/11; Ubuntu 16.04.7/8.04.5/20.04.3; Centos 7.6/7.8
OTHER SUPPORT	Support RTC Real-Time Clock and Timing Switch

PRODUCT RELIABILITY

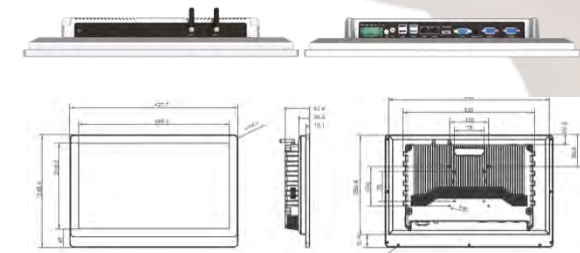
WORKING TEMPERATURE	-10°C~60°C
STORAGE TEMPERATURE	-20°C~70°C
RELATIVE HUMIDITY	95% Non-Condensing
VIBRATION PROTECTION	IEC 60068-2-64, 5 ~ 500 Hz, 1 hr/axis
IMPACT PROTECTION	IEC 60068-2-27, Half sine wave for 11ms
PRODUCT CERTIFICATION	CCC/CE/FCC/EMC/CB/ROHS

DIMENSIONS AND INTERFACES

Intel® Celeron®



Intel® Core™ i3 - i5 - i7



PRODUCT INSTALLATION TYPES



Embedded Installation	Wall Mounted Installation	Desktop Installation	Louver Installation	Cantilever Installation	Boom Type Installation
-----------------------	---------------------------	----------------------	---------------------	-------------------------	------------------------

INDUSTRIAL PANEL PC

IPC4-185WFC Full Closed Chassie

IPC4 Full Closed industrial panel pc serie have features an elegant design using aluminum alloy flat panels, incorporating a fanless and fully enclosed integrated system. Its overall profile combines industrial-grade quality with a sleek commercial appearance. This versatile solution finds applications in various fields, including industrial control, military, communication, power, and automation, such as network infrastructure and intelligent self-service terminal equipment.

FEATURES

- Aesthetic And Technologically Advanced Appearance
- Efficient Heat Dissipation Design With Fanless Operation
- Suitable For Use In Diverse And Demanding Working Environments
- Crafted From Lightweight And Durable Aluminum Alloy
- Compliant With EMC Standards
- Equipped With Dual Gigabit Networks And Expandable Interfaces.
- Compatible With A Wide Voltage Power Supply Of 12-36V
- Multiple Installation Options
- IP65 Front Panel for Dust and Water Protection



18.5" Intel® Celeron®



18.5" Intel® Core™



PRODUCT SPECIFICATIONS

Screen Parameters

LCD Size	18.5" TFT LCD
Resolution	1920×1080
Viewing Angle	89/89/89/89(L/R/U/D)
Colour	16.7M
Brightness	400 cd/m ²
Contrast Ratio	1000:1

Interface

HDMI	1* HDMI, Support HDMI Data Output, 1080p
USB	2* USB 2.0 + 2* USB 3.0
LAN	2* LAN, Dual 1000M Adaptive Ethernet
AUDIO	1* Audio I/O, Support Audio Input and Output
VGA	1* VGA
Serial Port	1* RS232 + 1* RS232 RS485 RS422 [Adjustable via BIOS]

Touch Screen

Touch Screen Type	10 Point Touch PCAP & Resistive
Light Transmittance	≥88%
Input Mode	Handwriting or Capacitive Pen
Controller Communication	USB

Power Parameters

Input Voltage	DC 12V-36V - Double Input (Not Redundant)
Static Power	60W

Dimensions

Outer	W 455.5 x H 302.1 x D 61.8 mm
-------	-------------------------------

PRODUCT ORDERING CODES

Processor CPU	Body Color: Black		Body Color: Silver	
	PCAP	Resistive	PCAP	Resistive
Intel® Celeron® J6412	IPC4-185WFC-C10-6412	IPC4-185WFC-C20-6412	IPC4-185WFC-C11-6412	IPC4-185WFC-C21-6412
Intel® Core™ i3-8145U	IPC4-185WFC-i310-8145	IPC4-185WFC-i320-8145	IPC4-185WFC-i311-8145	IPC4-185WFC-i321-8145
Intel® Core™ i3-10110U	IPC4-185WFC-i310-10110	IPC4-185WFC-i320-10110	IPC4-185WFC-i311-10110	IPC4-185WFC-i321-10110
Intel® Core™ i5-8265U	IPC4-185WFC-i510-8265	IPC4-185WFC-i520-8265	IPC4-185WFC-i511-8265	IPC4-185WFC-i521-8265
Intel® Core™ i5-10210U	IPC4-185WFC-i510-10210	IPC4-185WFC-i520-10210	IPC4-185WFC-i511-10210	IPC4-185WFC-i521-10210
Intel® Core™ i7-7500U	IPC4-185WFC-i710-7500	IPC4-185WFC-i720-7500	IPC4-185WFC-i711-7500	IPC4-185WFC-i721-7500
Intel® Core™ i7-10510U	IPC4-185WFC-i710-10510	IPC4-185WFC-i720-10510	IPC4-185WFC-i711-10510	IPC4-185WFC-i721-10510

INDUSTRIAL PANEL PC

PROCESSOR MODELS | CPU



CPU	Intel® Celeron® J6412 2.00 GHz
CPU TURBO FREQUENCY	2.60 GHz
CORE	4
INTEGRATED GRAPHICS	Intel® HD Graphic 620

CPU	Intel® Core™ I3-8145U 2.10 GHz	Intel® Core™ I3-10110U 2.10 GHz
CPU TURBO FREQUENCY	3.90 GHz	4.10 GHz
CORE	2	2
INTEGRATED GRAPHICS	Intel Ultra HD Graphic 620	Intel Ultra HD Graphic 620

CPU	Intel® Core™ I5-8265U 1.60 GHz	Intel® Core™ I5-10210U 1.60 GHz
CPU TURBO FREQUENCY	3.90 GHz	4.20 GHz
CORE	4	4
INTEGRATED GRAPHICS	Intel Ultra HD Graphic 620	Intel Ultra HD Graphic 620

CPU	Intel® Core™ I7-7500U 2.70 GHz	Intel® Core™ I7-10510U 1.80 GHz
CPU TURBO FREQUENCY	3.50 GHz	4.90 GHz
CORE	4	4
INTEGRATED GRAPHICS	Intel Ultra HD Graphic 620	Intel Ultra HD Graphic 630

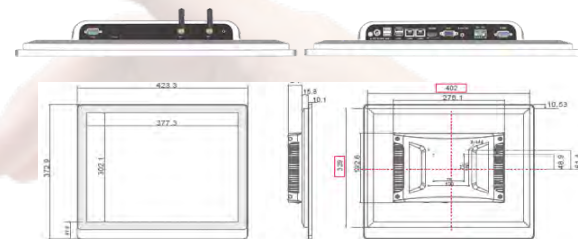
RAM	Default 8GB DDR4 Optional Intel® Celeron® up to 32GB Intel® Core™ Up To 64GB
STORAGE	Default 128GB Msata - Optional up to 512GB
WI-FI - BLUETOOTH	2.40 GHz / 5.00 GHz Dual Bands - Bluetooth 4.0
OPERATING SYSTEM	Windows 10/11; Ubuntu16.04.7/8.04.5/20.04.3; Centos7.6/7.8
OTHER SUPPORT	Support RTC Real-Time Clock and Timing Switch

PRODUCT RELIABILITY

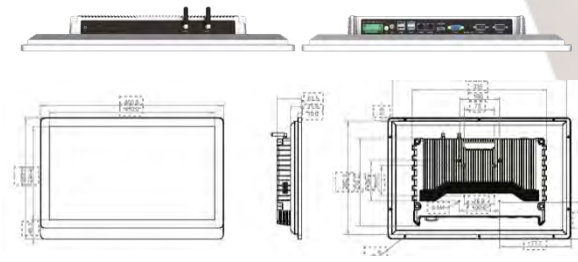
WORKING TEMPERATURE	-10°C~60°C
STORAGE TEMPERATURE	-20°C~70°C
RELATIVE HUMIDITY	95% Non-Condensing
VIBRATION PROTECTION	IEC 60068-2-64, 5 ~ 500 Hz, 1 hr/axis
IMPACT PROTECTION	IEC 60068-2-27, Half sine wave for 11ms
PRODUCT CERTIFICATION	CCC/CE/FCC/EMC/CB/ROHS

DIMENSIONS AND INTERFACES

Intel® Celeron®



Intel® Core™ i3 - i5 - i7



PRODUCT INSTALLATION TYPES



Embedded Installation	Wall Mounted Installation	Desktop Installation	Louver Installation	Cantilever Installation	Boom Type Installation
-----------------------	---------------------------	----------------------	---------------------	-------------------------	------------------------

INDUSTRIAL PANEL PC

IPC4-190WFC Full Closed Chassie

IPC4 Full Closed industrial panel pc serie have features an elegant design using aluminum alloy flat panels, incorporating a fanless and fully enclosed integrated system. Its overall profile combines industrial-grade quality with a sleek commercial appearance. This versatile solution finds applications in various fields, including industrial control, military, communication, power, and automation, such as network infrastructure and intelligent self-service terminal equipment.

FEATURES

- Aesthetic And Technologically Advanced Appearance
- Efficient Heat Dissipation Design With Fanless Operation
- Suitable For Use In Diverse And Demanding Working Environments
- Crafted From Lightweight And Durable Aluminum Alloy
- Compliant With EMC Standards
- Equipped With Dual Gigabit Networks And Expandable Interfaces.
- Compatible With A Wide Voltage Power Supply Of 12-36V
- Multiple Installation Options
- IP65 Front Panel for Dust and Water Protection



19" Intel® Celeron®



19" Intel® Core™



PRODUCT SPECIFICATIONS

Screen Parameters

LCD Size	19" TFT LCD
Resolution	1280×1024
Viewing Angle	85/85/80/80 (L/R/U/D)
Colour	16.7M
Brightness	300 cd/m ²
Contrast Ratio	1000:1

Interface

HDMI	1* HDMI, Support HDMI Data Output, 1080p
USB	2* USB 2.0 + 2* USB 3.0
LAN	2* LAN, Dual 1000M Adaptive Ethernet
AUDIO	1* Audio I/O, Support Audio Input and Output
VGA	1* VGA
Serial Port	1* RS232 + 1* RS232 RS485 RS422 [Adjustable via BIOS]

Touch Screen

Touch Screen Type	10 Point Touch PCAP & Resistive
Light Transmittance	≥88%
Input Mode	Handwriting or Capacitive Pen
Controller Communication	USB

Power Parameters

Input Voltage	DC 12V-36V - Double Input (Not Redundant)
Static Power	60W

Dimensions

Outer	W 423.3 x H 372.8 x D 59.9 mm
-------	-------------------------------

PRODUCT ORDERING CODES

Processor CPU	Body Color: Black		Body Color: Silver	
	PCAP	Resistive	PCAP	Resistive
Intel® Celeron® J6412	IPC4-190WFC-C10-6412	IPC4-190WFC-C20-6412	IPC4-190WFC-C11-6412	IPC4-190WFC-C21-6412
Intel® Core™ i3-8145U	IPC4-190WFC-i310-8145	IPC4-190WFC-i320-8145	IPC4-190WFC-i311-8145	IPC4-190WFC-i321-8145
Intel® Core™ i3-10110U	IPC4-190WFC-i310-10110	IPC4-190WFC-i320-10110	IPC4-190WFC-i311-10110	IPC4-190WFC-i321-10110
Intel® Core™ i5-8265U	IPC4-190WFC-i510-8265	IPC4-190WFC-i520-8265	IPC4-190WFC-i511-8265	IPC4-190WFC-i521-8265
Intel® Core™ i5-10210U	IPC4-190WFC-i510-10210	IPC4-190WFC-i520-10210	IPC4-190WFC-i511-10210	IPC4-190WFC-i521-10210
Intel® Core™ i7-7500U	IPC4-190WFC-i710-7500	IPC4-190WFC-i720-7500	IPC4-190WFC-i711-7500	IPC4-190WFC-i721-7500
Intel® Core™ i7-10510U	IPC4-190WFC-i710-10510	IPC4-190WFC-i720-10510	IPC4-190WFC-i711-10510	IPC4-190WFC-i721-10510

INDUSTRIAL PANEL PC

PROCESSOR MODELS | CPU



CPU	Intel® Celeron® J6412 2.00 GHz
CPU TURBO FREQUENCY	2.60 GHz
CORE	4
INTEGRATED GRAPHICS	Intel® HD Graphic 620

CPU	Intel® Core™ I3-8145U 2.10 GHz	Intel® Core™ I3-10110U 2.10 GHz
CPU TURBO FREQUENCY	3.90 GHz	4.10 GHz
CORE	2	2
INTEGRATED GRAPHICS	Intel Ultra HD Graphic 620	Intel Ultra HD Graphic 620

CPU	Intel® Core™ I5-8265U 1.60 GHz	Intel® Core™ I5-10210U 1.60 GHz
CPU TURBO FREQUENCY	3.90 GHz	4.20 GHz
CORE	4	4
INTEGRATED GRAPHICS	Intel Ultra HD Graphic 620	Intel Ultra HD Graphic 620

CPU	Intel® Core™ I7-7500U 2.70 GHz	Intel® Core™ I7-10510U 1.80 GHz
CPU TURBO FREQUENCY	3.50 GHz	4.90 GHz
CORE	4	4
INTEGRATED GRAPHICS	Intel Ultra HD Graphic 620	Intel Ultra HD Graphic 630

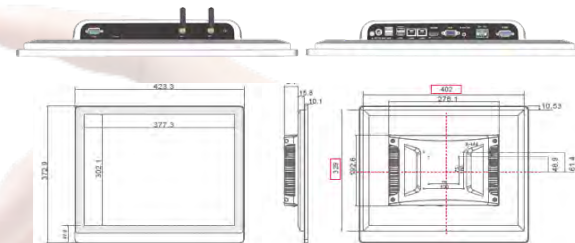
RAM	Default 8GB DDR4 Optional Intel® Celeron® up to 32GB Intel® Core™ Up To 64GB
STORAGE	Default 128GB Msata - Optional up to 512GB
WI-FI - BLUETOOTH	2.40 GHz / 5.00 GHz Dual Bands – Bluetooth 4.0
OPERATING SYSTEM	Windows 10/11; Ubuntu16.04.7/8.04.5/20.04.3; Centos7.6/7.8
OTHER SUPPORT	Support RTC Real-Time Clock and Timing Switch

PRODUCT RELIABILITY

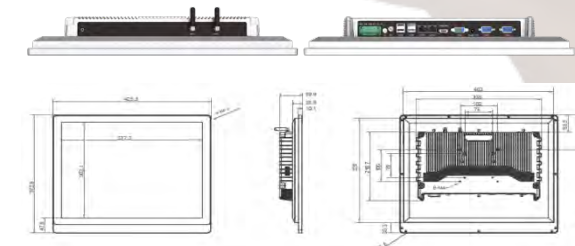
WORKING TEMPERATURE	-10°C~60°C
STORAGE TEMPERATURE	-20°C~70°C
RELATIVE HUMIDITY	95% Non-Condensing
VIBRATION PROTECTION	IEC 60068-2-64, 5 ~ 500 Hz, 1 hr/axis
IMPACT PROTECTION	IEC 60068-2-27, Half sine wave Ffor 11ms
PRODUCT CERTIFICATION	CCC/CE/FCC/EMC/CB/ROHS

DIMENSIONS AND INTERFACES

Intel® Celeron®



Intel® Core™ i3 – i5 – i7



PRODUCT INSTALLATION TYPES



Embedded Installation	Wall Mounted Installation	Desktop Installation	Louver Installation	Cantilever Installation	Boom Type Installation
-----------------------	---------------------------	----------------------	---------------------	-------------------------	------------------------

INDUSTRIAL PANEL PC

IPC4-191WFC Full Closed Chassie

IPC4 Full Closed industrial panel pc serie have features an elegant design using aluminum alloy flat panels, incorporating a fanless and fully enclosed integrated system. Its overall profile combines industrial-grade quality with a sleek commercial appearance. This versatile solution finds applications in various fields, including industrial control, military, communication, power, and automation, such as network infrastructure and intelligent self-service terminal equipment.

FEATURES

- Aesthetic And Technologically Advanced Appearance
- Efficient Heat Dissipation Design With Fanless Operation
- Suitable For Use In Diverse And Demanding Working Environments
- Crafted From Lightweight And Durable Aluminum Alloy
- Compliant With EMC Standards
- Equipped With Dual Gigabit Networks And Expandable Interfaces.
- Compatible With A Wide Voltage Power Supply Of 12-36V
- Multiple Installation Options
- IP65 Front Panel for Dust and Water Protection



19.1" Intel® Celeron®



19.1" Intel® Core™



PRODUCT SPECIFICATIONS

Screen Parameters

LCD Size	19.1" TFT LCD
Resolution	1440×900
Viewing Angle	80/80/80/80 (L/R/U/D)
Colour	16.7M
Brightness	300 cd/m ²
Contrast Ratio	1000:1

Touch Screen

Touch Screen Type	10 Point Touch PCAP & Resistive
Light Transmittance	≥88%
Input Mode	Handwriting or Capacitive Pen
Controller Communication	USB

Interface

HDMI	1* HDMI, Support HDMI Data Output, 1080p
USB	2* USB 2.0 + 2* USB 3.0
LAN	2* LAN, Dual 1000M Adaptive Ethernet
AUDIO	1* Audio I/O, Support Audio Input and Output
VGA	1* VGA
Serial Port	1* RS232 + 1* RS232 RS485 RS422 [Adjustable via BIOS]

Power Parameters

Input Voltage	DC 12V-36V - Double Input (Not Redundant)
Static Power	60W

Dimensions

Outer	W 455.5 x H 328.2 x D 60.8 mm
-------	-------------------------------

PRODUCT ORDERING CODES

Processor CPU	Body Color: Black		Body Color: Silver	
	PCAP	Resistive	PCAP	Resistive
Intel® Celeron® J6412	IPC4-191WFC-C10-6412	IPC4-191WFC-C20-6412	IPC4-191WFC-C11-6412	IPC4-191WFC-C21-6412
Intel® Core™ i3-8145U	IPC4-191WFC-i310-8145	IPC4-191WFC-i320-8145	IPC4-191WFC-i311-8145	IPC4-191WFC-i321-8145
Intel® Core™ i3-10110U	IPC4-191WFC-i310-10110	IPC4-191WFC-i320-10110	IPC4-191WFC-i311-10110	IPC4-191WFC-i321-10110
Intel® Core™ i5-8265U	IPC4-191WFC-i510-8265	IPC4-191WFC-i520-8265	IPC4-191WFC-i511-8265	IPC4-191WFC-i521-8265
Intel® Core™ i5-10210U	IPC4-191WFC-i510-10210	IPC4-191WFC-i520-10210	IPC4-191WFC-i511-10210	IPC4-191WFC-i521-10210
Intel® Core™ i7-7500U	IPC4-191WFC-i710-7500	IPC4-191WFC-i720-7500	IPC4-191WFC-i711-7500	IPC4-191WFC-i721-7500
Intel® Core™ i7-10510U	IPC4-191WFC-i710-10510	IPC4-191WFC-i720-10510	IPC4-191WFC-i711-10510	IPC4-191WFC-i721-10510

INDUSTRIAL PANEL PC

PROCESSOR MODELS | CPU



CPU	Intel® Celeron® J6412 2.00 GHz
CPU TURBO FREQUENCY	2.60 GHz
CORE	4
INTEGRATED GRAPHICS	Intel® HD Graphic 620

CPU	Intel® Core™ I3-8145U 2.10 GHz	Intel® Core™ I3-10110U 2.10 GHz
CPU TURBO FREQUENCY	3.90 GHz	4.10 GHz
CORE	2	2
INTEGRATED GRAPHICS	Intel Ultra HD Graphic 620	Intel Ultra HD Graphic 620

CPU	Intel® Core™ I5-8265U 1.60 GHz	Intel® Core™ I5-10210U 1.60 GHz
CPU TURBO FREQUENCY	3.90 GHz	4.20 GHz
CORE	4	4
INTEGRATED GRAPHICS	Intel Ultra HD Graphic 620	Intel Ultra HD Graphic 620

CPU	Intel® Core™ I7-7500U 2.70 GHz	Intel® Core™ I7-10510U 1.80 GHz
CPU TURBO FREQUENCY	3.50 GHz	4.90 GHz
CORE	4	4
INTEGRATED GRAPHICS	Intel Ultra HD Graphic 620	Intel Ultra HD Graphic 630

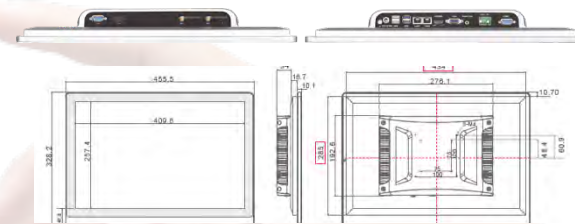
RAM	Default 8GB DDR4 Optional Intel® Celeron® up to 32GB Intel® Core™ Up To 64GB
STORAGE	Default 128GB Msata - Optional up to 512GB
WI-FI - BLUETOOTH	2.40 GHz / 5.00 GHz Dual Bands - Bluetooth 4.0
OPERATING SYSTEM	Windows 10/11; Ubuntu16.04.7/8.04.5/20.04.3; Centos7.6/7.8
OTHER SUPPORT	Support RTC Real-Time Clock and Timing Switch

PRODUCT RELIABILITY

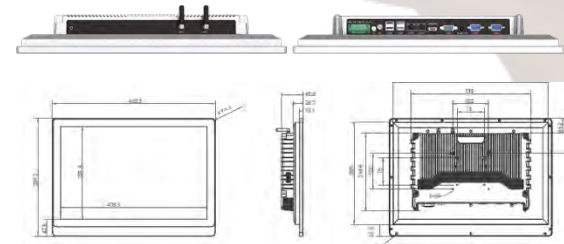
WORKING TEMPERATURE	-10°C~60°C
STORAGE TEMPERATURE	-20°C~70°C
RELATIVE HUMIDITY	95% Non-Condensing
VIBRATION PROTECTION	IEC 60068-2-64, 5 ~ 500 Hz, 1 hr/axis
IMPACT PROTECTION	IEC 60068-2-27, Half sine wave Ffor 11ms
PRODUCT CERTIFICATION	CCC/CE/FCC/EMC/CB/ROHS

DIMENSIONS AND INTERFACES

Intel® Celeron®



Intel® Core™ i3 - i5 - i7



PRODUCT INSTALLATION TYPES



Embedded Installation	Wall Mounted Installation	Desktop Installation	Louver Installation	Cantilever Installation	Boom Type Installation
-----------------------	---------------------------	----------------------	---------------------	-------------------------	------------------------

INDUSTRIAL PANEL PC

IPC4-215WFC Full Closed Chassie

IPC4 Full Closed industrial panel pc serie have features an elegant design using aluminum alloy flat panels, incorporating a fanless and fully enclosed integrated system. Its overall profile combines industrial-grade quality with a sleek commercial appearance. This versatile solution finds applications in various fields, including industrial control, military, communication, power, and automation, such as network infrastructure and intelligent self-service terminal equipment.

FEATURES

- Aesthetic And Technologically Advanced Appearance
- Efficient Heat Dissipation Design With Fanless Operation
- Suitable For Use In Diverse And Demanding Working Environments
- Crafted From Lightweight And Durable Aluminum Alloy
- Compliant With EMC Standards
- Equipped With Dual Gigabit Networks And Expandable Interfaces.
- Compatible With A Wide Voltage Power Supply Of 12-36V
- Multiple Installation Options
- IP65 Front Panel for Dust and Water Protection



21.5" Intel® Celeron®



21.5" Intel® Core™



PRODUCT SPECIFICATIONS

Screen Parameters

LCD Size	21.1" TFT LCD
Resolution	1920×1080
Viewing Angle	89/89/89/89 (L/R/U/D)
Colour	16.7M
Brightness	300 cd/m ²
Contrast Ratio	1000:1

Interface

HDMI	1* HDMI, Support HDMI Data Output, 1080p
USB	2* USB 2.0 + 2* USB 3.0
LAN	2* LAN, Dual 1000M Adaptive Ethernet
AUDIO	1* Audio I/O, Support Audio Input and Output
VGA	1* VGA
Serial Port	1* RS232 + 1* RS232 RS485 RS422 [Adjustable via BIOS]

Touch Screen

Touch Screen Type	10 Point Touch PCAP & Resistive
Light Transmittance	≥88%
Input Mode	Handwriting or Capacitive Pen
Controller Communication	USB

Power Parameters

Input Voltage	DC 12V-36V - Double Input (Not Redundant)
Static Power	60W

Dimensions

Outer	W 522 x H 338.5 x D 62.6 mm
-------	-----------------------------

PRODUCT ORDERING CODES

Processor CPU	Body Color: Black		Body Color: Silver	
	PCAP	Resistive	PCAP	Resistive
Intel® Celeron® J6412	IPC4-215WFC-C10-6412	IPC4-215WFC-C20-6412	IPC4-215WFC-C11-6412	IPC4-215WFC-C21-6412
Intel® Core™ i3-8145U	IPC4-215WFC-i310-8145	IPC4-215WFC-i320-8145	IPC4-215WFC-i311-8145	IPC4-215WFC-i321-8145
Intel® Core™ i3-10110U	IPC4-215WFC-i310-10110	IPC4-215WFC-i320-10110	IPC4-215WFC-i311-10110	IPC4-215WFC-i321-10110
Intel® Core™ i5-8265U	IPC4-215WFC-i510-8265	IPC4-215WFC-i520-8265	IPC4-215WFC-i511-8265	IPC4-215WFC-i521-8265
Intel® Core™ i5-10210U	IPC4-215WFC-i510-10210	IPC4-215WFC-i520-10210	IPC4-215WFC-i511-10210	IPC4-215WFC-i521-10210
Intel® Core™ i7-7500U	IPC4-215WFC-i710-7500	IPC4-215WFC-i720-7500	IPC4-215WFC-i711-7500	IPC4-215WFC-i721-7500
Intel® Core™ i7-10510U	IPC4-215WFC-i710-10510	IPC4-215WFC-i720-10510	IPC4-215WFC-i711-10510	IPC4-215WFC-i721-10510

INDUSTRIAL PANEL PC

PROCESSOR MODELS | CPU



CPU	Intel® Celeron® J6412 2.00 GHz
CPU TURBO FREQUENCY	2.60 GHz
CORE	4
INTEGRATED GRAPHICS	Intel® HD Graphic 620

CPU	Intel® Core™ I3-8145U 2.10 GHz	Intel® Core™ I3-10110U 2.10 GHz
CPU TURBO FREQUENCY	3.90 GHz	4.10 GHz
CORE	2	2
INTEGRATED GRAPHICS	Intel Ultra HD Graphic 620	Intel Ultra HD Graphic 620

CPU	Intel® Core™ I5-8265U 1.60 GHz	Intel® Core™ I5-10210U 1.60 GHz
CPU TURBO FREQUENCY	3.90 GHz	4.20 GHz
CORE	4	4
INTEGRATED GRAPHICS	Intel Ultra HD Graphic 620	Intel Ultra HD Graphic 620

CPU	Intel® Core™ I7-7500U 2.70 GHz	Intel® Core™ I7-10510U 1.80 GHz
CPU TURBO FREQUENCY	3.50 GHz	4.90 GHz
CORE	4	4
INTEGRATED GRAPHICS	Intel Ultra HD Graphic 620	Intel Ultra HD Graphic 630

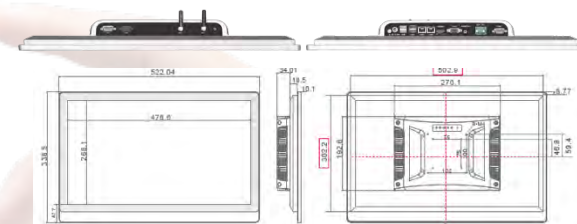
RAM	Default 8GB DDR4 Optional Intel® Celeron® up to 32GB Intel® Core™ Up To 64GB
STORAGE	Default 128GB Msata - Optional up to 512GB
WI-FI - BLUETOOTH	2.40 GHz / 5.00 GHz Dual Bands – Bluetooth 4.0
OPERATING SYSTEM	Windows 10/11; Ubuntu16.04.7/8.04.5/20.04.3; Centos7.6/7.8
OTHER SUPPORT	Support RTC Real-Time Clock and Timing Switch

PRODUCT RELIABILITY

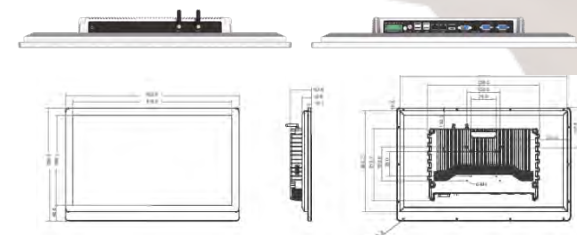
WORKING TEMPERATURE	-10°C~60°C
STORAGE TEMPERATURE	-20°C~70°C
RELATIVE HUMIDITY	95% Non-Condensing
VIBRATION PROTECTION	IEC 60068-2-64, 5 ~ 500 Hz, 1 hr/axis
IMPACT PROTECTION	IEC 60068-2-27, Half sine wave Ffor 11ms
PRODUCT CERTIFICATION	CCC/CE/FCC/EMC/CB/ROHS

DIMENSIONS AND INTERFACES

Intel® Celeron®



Intel® Core™ i3 – i5 – i7



PRODUCT INSTALLATION TYPES



Embedded Installation	Wall Mounted Installation	Desktop Installation	Louver Installation	Cantilever Installation	Boom Type Installation
-----------------------	---------------------------	----------------------	---------------------	-------------------------	------------------------